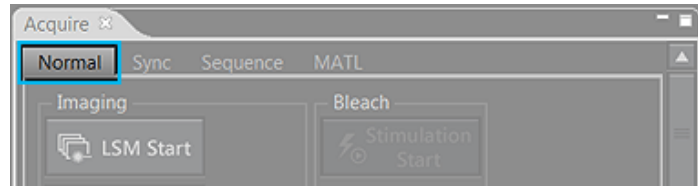




Starting acquisition

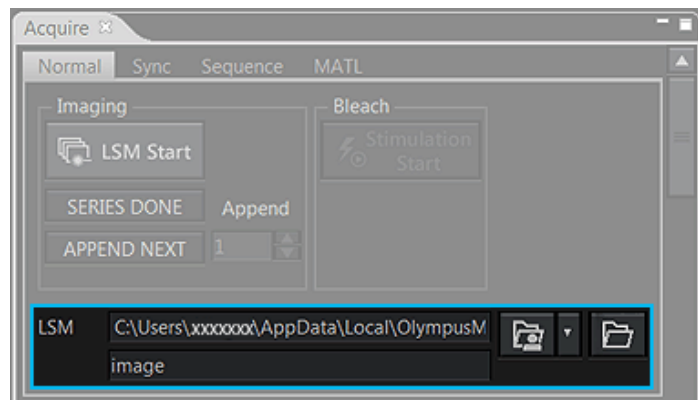
- 1 Select [Normal] tab in [Acquire] Tool Window.



- 2 Press the  button to display the dialog box, and select the folder to save the images.

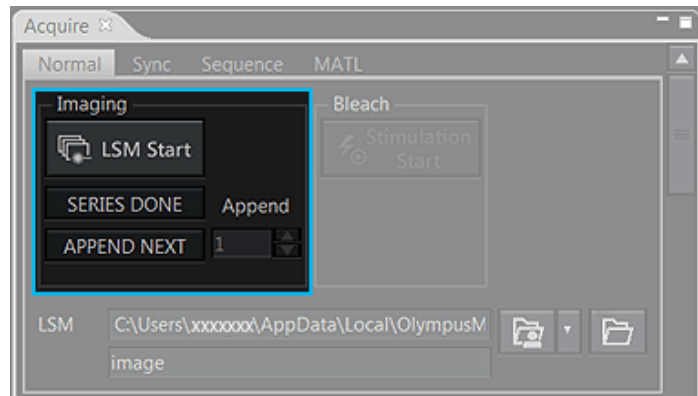
 In order to organize files easily after acquiring the images, it is recommended to create a new folder before acquiring the images and specify that folder as the save destination of the images.

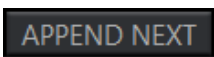
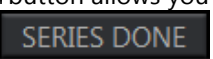
 The acquired images are saved automatically.



- 3 Press the  button to start acquiring the image.

 When the image acquisition starts, the [Image] window opens and the image in process of acquisition is displayed.



- 4 After the image is acquired, pressing the  button allows you to perform the image acquisition repetitively under the same condition. Press the  button to complete the image acquisition.